

RIKKYO ECHO

VOL. XV NO. I

ST. PAUL'S UNIVERSITY

April, 1961 Price 10 Yen



And in green underwood and cover.

Blossom by blossom the spring begins.

A.C. Swinburne

Entrance—Narrow Gate

The entrance examination was held from February 28 to March 6 at Rikkyo University. This year's competition was keener than ever; the rate of competition was about one in eight; so, only 2,125 candidates successfully passed through the "narrow gate."

The total number of applicants was 17,218 (increase 579 as compared with last year); that is, 6,189 (increase 417) for Economics; 3,534 (increase 457) for Arts; 2,937 (increase 274) for Social Relations; 3,639 (decrease 627) for Law and Politics; 922 (increase 58) for Science.

Successful candidates must

Testimonial For Mr. Morris

St. Paul's University was the recipient of a testimonial and a framed picture of the Kanrin-aru, which had been awarded to the late American Missionary, Rev. Arthur Morris by the Steering Committee for the Centenary of Amity and Diplomatic Relations between the United States and Japan, for his great contributions to Japanese culture and education, in the early part of the Meiji Era. As no friend or relative of Rev. Morris survives in America, these gifts were forwarded by the Committee to Rikkyo University with which the Missionary was closely associated. Morris Memorial Hall, a brick building, which stands in the center of our campus, was built in 1918 by the bequest of Rev. Morris who had passed away in 1913. Rev. Arthur Morris came to Japan in 1871 and established the Elwa-Gakusha (English-Japanese School), which became united with Rikkyo in 1887. Rev. Morris may thus be called one of the pillars of St. Paul's University.

pay the entrance-fee, before they are formally admitted as Freshmen of Rikkyo University. The entrance-fee, which may be called the school fee in a wide sense, was raised from ¥15,000 to ¥50,000 beginning this year, in spite of strong opposition by the students.

There is criticism that the increase of the school fee in private universities endangers the equal opportunity of education. President Matsushita said concerning the increase of the school fee.

"This increase was necessary in order to raise the salaries of professors and employees, which are now much lower than that of public officials and to raise the budgets for purchasing books and equipment. As can be seen from above, under the present condition, the school operating expenses increase year by year but the income does not increase unless the school fee is raised.

New Library Opened

The new Library building, the opening of which had been put off for certain reasons of design, was completed in December, last year. Students were able to make full use of it preparing for the final examinations. Since its completion, the building has been much talked about among universities in Tokyo, owing to its very unique design. Mr. Michimura, librarian, made the following comments about library administration: 1) the prolongation of the library hours that the students demand will be given consideration and there is much hope that their demand will be realized soon. 2) The old library building is undergoing slight repair work and will soon be opened to the students as the third reading-room. Upon the completion of this repair, the seating capacity of the library will be increased to 500. 3) The library authorities hope that students will observe the etiquette of the student, in order to keep the library a quiet place for study. Prof. Banshoya, who has been the head librarian for thirteen years, went out of office in March of this year because of the age limit. He will be succeeded by Mr. Suenobu, former chief librarian at Tokyo Univ.

First Kawanishi Scholar Decided

The Kawanishi Scholarship was awarded to Minoru Terada, Senior of the Economics Department, by Dr. Taichiro Kawanishi, on Feb. 1. Nine seniors of the Economics Department, with high scholastic standings applied for the Kawanishi Scholarship in 1960. After the examination and interviews carried out on Jan. 21, the nominating committee selected Terada as the first scholar to be given the Kawanishi Scholarship. The Kawanishi Scholarship has the double purpose of helping economically strained students and commemorating the distinguished services, rendered by Dr. Taichiro Kawanishi, former Dean of the College of Economics.

Campus Today

1,395 Start in Life

Rikkyo's 39th Commencement took place in Tucker Hall, Mar. 25, with Pres. M. Matsushita presiding.

The Baccalaureate was held in Tucker Hall at 2:00 p.m. Friday, March 24. The sermon was delivered by Bishop Hinsuke Yashiro, Chairman of the Board of Trustees. Dr. Bartlett, Cultural Attache, the representative of Dr. Edwin O. Reischauer, U.S. Ambassador to Japan, read a message to the graduating students. More than fifty foreign guests were present.

Graduation exercises were held on March 25, at 10:00 a.m. for the College of Economics, and at 2:00 p.m. for the Colleges of Arts, Science, Social Re-

lations, Law and Politics. Diplomas were awarded to 1,356 undergraduates and 39 post-graduates.

Dr. Schneider, received a Ph. D. degree in Theology. This was the first time in the 86 years of Rikkyo's history that an American received an academic degree.

Two Musical Tours

Fifty members of the Rikkyo Symphony Orchestra made a musical tour of the Tohoku and Hokkaido districts from Mar. 11 to 19. The concerts were directed by Mr. Akira Shiota, a graduate of Rikkyo. They played the most famous classical numbers, including Beethoven's Symphony No. 5, in order to get local people interested in ser-

I think you know what you want in Rikkyo University. You want to be true Rikkyo men and women; and that is exactly what I want. What are true Rikkyo men and women? Those who take joy in serving God and the Country are true Rikkyo men and women. Those who take joy in serving God must believe in God. Then, what is God? This is beyond my power to answer. However, we know that God is the Creator of men and women, and that He is the Master of history. He can create a country if He wants. He can destroy it if He wants. Therefore, those who take joy in serving God must put ultimate

trust in God. They should love the country and render their best service within their power. But they should not try to control the destiny of the country.

Those who made a violent action against Mr. Hargerty in Haneda may have acted according to their own conscience. But taking a violent action they tried to assume the role which is beyond human limitation. A seventeen year old boy assassinated Mr. Asanuma. Perhaps he thought he was serving the country by doing so. But using such a method he was assuming the role of God. True Rikkyo men and women are those who take joy in serving the country, always realizing their own human limitations, because serving God is believing in God, and the foundation of believing in God is the realization of human limitations.

Student Hall Drive to Be Launched

A student campaign for materializing the long coveted Student Hall will be launched soon, and the standing committee for urging its construction will be formed in April. The student hall, the centre of student extracurricular activities, must ideally contain club rooms, meeting rooms, a music training room, a small auditorium, and a lounge. It will be wonderful, if all these are materialized. Meeting rooms, in particular, would be fully taken advantage of by the students for their round-table discussions. Moreover, a student hall will become an ideal place for get-togethers between professors and students.

The campaign will be conducted by the head office of the Cultural Association, and all the preparations will be completed by April. The standing committee for urging the construction of a student hall will be made up of the representatives of all the student organizations at Rikkyo. In May, lecture meetings calling for support will be arranged. The active campaigns for gathering signatures and raising funds will be launched on the campus. These student movements will aim at arousing general interest in this important matter.

The University authorities, recognize the necessity of a student hall, but they are somewhat doubtful as to the number who really feel the need for such a building.

Rikkyo's Academic Calendar

This year's Academic Calendar was announced and the following two points stand out:

First, the summer vacation this year will be 6 days shorter than that of last year, that is, it will be from July 1, to September 5.

The school hours at Rikkyo University are usually a few weeks shorter as compared with the prescribed school hours. The summer vacation, an officer of the University said, must be shortened, so as to meet the prescribed number of hours.

Secondly, the Freshmen will begin April 17, which is a week later than the beginning of the Sophomore, Junior and Senior classes.

For this week, many types of orientation meetings are scheduled in order that the Freshmen may know and understand what their University is like and what activities are carried out by the clubs. The orientations scheduled are as follows: April 10-13, Guidance by each college.

April 14, Welcoming Party under the auspices of the Student Government.

April 15, Guidance for the Teacher's Course and the Museum Course.

Exchange Concert By Ahirukai

The Chorus Group "Ahirukai" held an exchange concert with the local youth at Numata and Maebashi in Gumma Prefecture on April 2 and 3. In addition to singing of world folk songs, the Club members gave lessons in folk dancing to the local youth and everyone had a very good time.

Activity of Hotel Management Club

The Hotel Management Club reported on the history and Culture of the Noto Peninsula on Mar. 16, at the request of the Japan Traffic Association, which heard of the brilliant exhibit made by the Club on the Peninsula at the Rikkyo Cultural Festival last year.

ious music. The Rikkyo Glee Club also made a week's tour of western Japan (Kanazawa, Kobe etc.) from March 25 to April 2. These concerts, which succeeded in enthraling the audiences were possible because of the support given by the alumni of the Glee Club in these provinces.

Harmonica Society On Television

St. Paul's University Harmonica Society appeared before the TV camera of NET, March 28, in the 15 minute-program at 12:00 p.m. under the direction of Mr. Toho Miyata, Mr. M. Kanno and Mr. R. Takagi. The band consists of 45 members of the Society and they executed "Mambo No. 5", "Poet and Peasant", "Festival of Youth." It was the first TV performance for the Harmonica Society.

Advice to Freshmen

Have "Frontier Spirit" In New Campus Life

The results of the entrance examinations have been announced. The ratio of the number of applicants for admission into Rikkyo University this year compared to the number of successful candidates was 8.1. In spite of the keen competitive rate, those of you who succeeded in the entrance examinations did so with flying colors. We congratulate you on your entering this university. Rikkyo is a colorful university in which to study or to enjoy your school time. The beautiful scenery of the four seasons here is sure to comfort you, even when you are tired with studying, when you are love-sick, or when you are harassed by the troubles of living. Rikkyo in April is overflowing with vigour and hope just as you are. Rikkyo Echo held a discussion meeting with elder students, who have fully experienced Rikkyo life. The following words were what they expressed at the meeting. We hope they will give you good advice or suggestion.

At the entrance examination there is always hope with anxiety, or anxiety with hope. But you have successfully passed the severe competitive entrance examination. Now you are going to begin a new campus life. The Rikkyo sophomores looking back upon their first college year here say something helpful to you.

Don't Lose Yourself

"We can have more free hours and longer vacations than in high school, so some of you may at first be at a loss entering a new environment, but you must make your own way, you must push away your former life of passivity.

"You should find many good friends and talk with them frankly. Your friends and professors will help you as much as they possibly can."

"You will have various experiences and through them you will become men of broad observation. We also expected to be promising young people. So we should do our best in everything."

"After all university is a system so it is important for us to learn what to do in it."

Class System

Now changing the subject, Rikkyo university has a class system during the two years of general education. We are given an appointment room and a seat. Each class has its own guidance professor. What do your seniors think about this system?

"To have an appointment room is very effective during the general education, especially for the freshmen who don't belong to any club. They should make the most of the guidance hour which they have once a week."

Rikkyo university sets great value on the percentage of class attendance. Your friends talked about this as follows:

"The general education of the university may be called another high school. Freshmen and sophomores are still young, both in mind and body, so if they are left entirely alone without



Photo shows, left to right, H. Kawano, T. Maruyama, O. Yamaguchi, T. Hiraishi, S. Togo, N. Uozumi including Echo reporters during their round-table talks at the Jigyo Kaikan.

any guidance from the teacher they may sometimes lose their way or face a spiritual danger. I understand the present system of Rikkyo university, but I'm afraid that some professors set our school record on the basis of the percentage of attendance."

A senior of yours who belongs to the athletic club said, "Though it is said that studying is hardly comparable with the training given in the club, this is a problem of will. Compared with other universities, Rikkyo university is certainly severe on the students in the matter of attendance, but I think it is rather good for us. We take lessons, we think more of the language class, and after school we begin our training. Sports is my hobby."

Club Activities

Here we talk together about a club activity:

"The importance of club activities is realized by any students. I think studying in the class goes along with it in our campus life. By entering a club you will get more good friends: senior members of the club often give you good advice based on their precious experiences. Some students who don't belong to any club will waste their time after school."

Advice to Coeds

Especially to girl students who have entered Rikkyo university, the sophomores said as follows:

"Some girls enter university without having any object. Although it is difficult for girls to make their distinct future

plans, girl students should make the most of their campus life for their future. The college life of the four years is very precious, and will never come again."

Be Positive!

Then we talked about some characteristics of Rikkyo students. "Rikkyo students are refined and gentlemanly. I think from the bottom of my heart that all of them are sincere."

"Nothing is more necessary for us Rikkyo students than to have the frontier spirit," every one agreed.

Keep Your Health

Adding to those students' advice, the Echo's reporters, agreed to give the following: Nowadays, the opportunities for education are open to almost all of the nation, so that there are very few who still remain illiterate. Many people are now admitted into universities, but some of them forget what college life ought to be—a life to cultivate themselves—and are busy getting an excellent school record. We want you, the students of the university, to reflect on this matter. We want you to be men who never lose heart, no matter what difficulty you may encounter. And the important thing for you in your school days is to build up a good body. Take care of your health. Without good health, you cannot do anything worth doing for yourselves and for other people.

Let's Build Our Student Hall

By Student President Of Cultural Association

In the prewar educational system of the university they put stress on sciences, but after the war the system changed to one in which cultural humanities have much weight.

According to the Fundamental Law of Education, education should be carried on to develop a person. He is expected to direct his efforts toward the perfection of self, to love truth and justice, and to be a healthy member of the nation in mind and body, with a spirit of independence.

But now, is this idea being sufficiently realized? I do not think so, because a university, for instance, Rikkyo university is now too big for a student to get in close contact with his professors and his fellow students to lead a rich college life. However, a Student Hall would give a solution.

What ought the Student Hall to be? It should be a place where the student activities, in the broadest sense, could be promoted. It should be built for the benefit of the students and its management should be carried on by the students themselves.

The Education Ministry is strongly interested in the matter of erecting a students' hall in universities.

In fact, such halls have already been built in the International Christian Univ., Ochanomizu Women's College, Japan Women's Univ., Meiji Univ., Waseda Univ., Keio Univ., and Gakushuin Univ.

In Tokyo Univ. the movement for erecting a hall has been underway for five years by the

Student Hall Establishing Committee which made up a plan and has collected some of a fund through "Drum saving" system."

In Rikkyo university the Student Council proposed four years ago to the school authorities the building of a Student Hall.

According to the plan, the net profit by all kinds of enterprises and the balance of the funds for the Cultural Association are to be transferred to the Students' Hall fund. We have 100,000 yen in this fund. We have visited other universities having their own Student Hall and have investigated them to make up a plan for our hall. Frankly speaking, these activities have been intermittent, but the time has come to start a decisive campaign for the erection of a Students' Hall.

This movement must be "For the benefit of all students, and not of a few."

In conclusion this movement is not a side activity of the Student Council and the Cultural Association but a movement of all students, by all students and for all students. We will set up "The Student Hall Establishing Committee" immediately and strive for the realization of the Student Hall as soon as we possibly can.

Students! Let's start a movement to build our Student Hall!

Student Conference At Yatsugatake

The annual Captain-Manager Meeting was held in the Yatsugatake Selsen Ryo-Dormitory from March 31 to April 3, representatives of the 57 organizations, Pres. Matsushita, about 110 students and Prof. Haya-saka, Sub-Dean of Students. The Discussions by the participants took the form of seminars, for the most part and the subjects of discussions were as follows: first, the people who are responsible for the cultural activities at Rikkyo made a great effort to find significance in cultural activities and to shape the Cultural Association's policies. Secondly, they discussed leadership in cultural activities and the consolidation of their organization. And lastly, they discussed, in a concrete form, the subjects of the Rikkyo Festi-

val and the Student-Hall. The expenses for the meeting amounted to 350,000 yen. The reports of the activities will be presented by every club in May.

Announcement

DR. PEDRO CAMPOS, professor of Sao Paulo Universidade, Sao Paulo, Brazil, has come to Rikkyo as a Visiting Lecturer for 1961-62.

Dr. Campos will teach:

1. Beginner's Portuguese
2. History of Japanese Immigration to Brazil
3. Brazilian History

If you hope to go to Brazil when you graduate then enroll for Dr. Campos' courses. Dr. Campos comes under the auspices of Friends of Rikkyo. The Brazilian Embassy and Prof. Haley are arranging a Brazilian exhibit on the campus to welcome Dr. Campos.

SPECIAL OFFER FOR STUDENTS ONLY

27 issues of
TIME

The Weekly Newsmagazine
only ¥935
(Half the regular rate)

Clip this ad and attach to sheet listing your name, address, school being attended and year of graduation. Send both with your remittance to TIME-LIFE International, Central Post Office Box 88, Tokyo, Weekly copies will be mailed direct from publisher.

ASAHI

定評ある
朝日の英字紙

EVENING

1ヶ月 ¥300

お申込みは 朝日新聞販売店へ

NEWS

Orient's Most Widely Circulated

English Language Daily

The Japan Times

¥360 per month

The Only Bilingual Student's
Weekly in Japan

The Student Times

¥100 per month

The Japan Times, Ltd., Uchisaiwai-cho, Chiyoda-ku, Tokyo
Tel (591) 5311/9

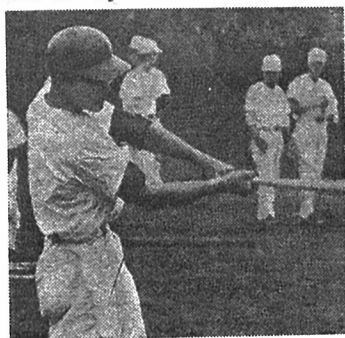
SPORTS

To Size Up Rikkyo Nine of This Year

With the opening of the Tokyo Big Six University League at hand, we, sports writers of Rikkyo Echo, visited the Rikkyo's nine at Higashi Nagasaki (the training camp ground) to forecast their conditions this spring season.

"A balanced team", as Tsuji (former manager) says, is one of the most characteristic points in the team of this year. There are not so many excellent players in our team, but on the contrary, the teamwork which was not found in the nine of last season is an advancement and the strong point. As to the pitcher, Ishikawa and Tateishi are in good condition; Ishikawa has a good shoot ball and a sharp curve ball. Tateishi, if he masters controlling the ball, will be active in his play, too. But it is very hard that there are only two pitchers from the pitcher's rotative standpoint.

Okamoto (catcher) and Kanki (shortstop) made progress in their fielding. Catcher has been a weak point the past two years, so if Okamoto develops skillful catching, this weakness will disappear. Shinoda (third baseman) has often yielded a clean hit on the center field, but he does not have a large scale as Sugimoto (former captain) in his fielding. This spot may be one of the weak points about which captain Maruyama is worrying.

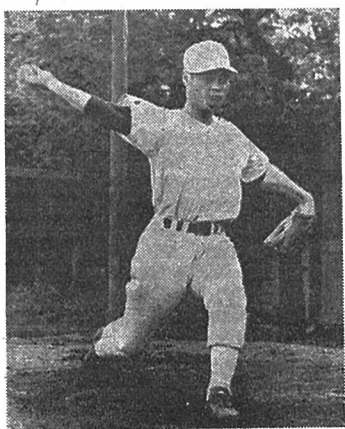


Center fielder Kanji Maruyama shows promise as a leading hitter. —Chunichi

On the other hand, in point of batting, captain Maruyama (center fielder) and Kanki (shortstop) will take a leading part. Maruyama (leading hitter of the last season) says about his batting: "There is no change in my batting condition compared with that of last season. I have changed my fielding position from first base to center field; this has not had any bad effect upon my batting. Of course, I should like to make thirty percent (batting average)." We will be able to see his grand hitting this season, too. But we are wondering who is proper for a top batter. Tsuge (left fielder) is not in good condition now, but if he recovers, he will be in line for top batter with his speedy footwork. Aono (second

baseman), Matsukawa (right-fielder), Maruyama and Kanki will be the scorers of our team. We want newcomers, Itozaki (Tobata high school), Sakamoto (Heian high school) and Matsumoto (Tochigi high school) to step on the mound of the Meiji Shrine Ball Park as soon as possible.

Lastly captain Maruyama talked about the Rikkyo nine of this spring season. "Short stop and catcher were the weak points last season, and were the cause of our defeat, but now they are in good condition. Third baseman is the weakness now but as Shinoda is a good batter, he will be a suitable man.



After a poor 1960 season Yozo Ishikawa makes a fine comeback with the Rikkyo Nine.—Chunichi

It is not too much to say that Rikkyo nine is a balanced and well-arranged team." And then he added, "A balanced team is very strong. Our team of this season is quite all right. So we will be able to meet your expectations."

Tsuji Retires



On March 25, at a meeting of the Athletic Department Managers of Rikkyo Univ., President Matsushita announced that Mr. Tsuji, the present manager of Rikkyo Baseball Club, would resign, effective March 31.

During this coming baseball season, the Rikkyo nine will therefore be obliged to carry on with no manager.

Clubs On Campus

Spring has come, and at the same time the sports season is upon us. Each club is absorbed in its training for victory. Then, let's focus on the active clubs.

The Soccer Club is one of the most promising sports clubs this season. Our Rikkyo Soccer team has many seniors as leaders. The new captain Mr. Watanabe, is a particularly speedy and strong forward. During the present training, it is the object to master a fundamental skill and individual play. Though they have not their own manager, they hope to get a suitable man for the post.

American Football has gradually interested the ordinary man in Rikkyo. Our Rikkyo American Football Club with thirty-four players and four managers is full of a fighting spirit: Doshisha vs Rikkyo; the Keio and Rikkyo periodical tilt, the Kanto Intercollegiate American Football League, and All Japan title match; these we hope to win.

At present in Rikkyo American Football, members are studying the formation of pass work in addition to developing physical strength.

Each Rikkyo Badminton member who participated in the eleventh-straight victory in the Autumn University Badminton League over Hosei last year has his strong fighting spirit to recapture the championship.

The Rikkyo Badminton Squad is now hard at training especially at net play for three or four hours every day at the Kokumin Taikukan. This training supports the fight and the persistence in the speedy game. Mr. Komiya, the new captain, says: "It is important for the players to have courage and to play ideally to bring the title to Rikkyo again."

The Rikkyo Lawn Tennis Club is really expected to win the 1961 Kanto Intercollegiate Tennis Title. Last year Rikkyo was ceded second to Keio. This year members of this club want to upset Kansai's No. 1 university and win the National Tennis Intercollegiate Championship.

Secondly, it strongly hopes to produce a Japan Davis Cup player in this club, and they believe this year they will realize it. This would be the first Davis Cup player from Rikkyo since Rikkyo Lawn Tennis Club was established.

We can expect Konishi and Ishii, and in singles Ohse and Kuramitsu as dark horses.

The Rikkyo Basketball Club might possibly monopolize the Kanto Intercollegiate Basketball League, the Kanto 6-University League, and the 1961 National Basketball Championship.

Rikkyo Defeats Meiji



Eight minutes after the play-off, through the confused fight in front of Meiji's goal, Rikkyo made a clean-shot from the left side to win a 7-5 victory over Meiji in Rikkyo-Meiji annual Ice Hockey game at the Korakuen Ice Palace, March 29. —The Hochi

Cheering Party for Rikkyoites

The Rikkyo Cheering Club is now having a busy time as the sports season nears. However, we had the opportunity to interview the cheering club with its manager Mr. Sano.

At present the club has forty-five members. Among them fifteen members belong to the Brass Band which helps with the cheering. The Rikkyo Cheering Club is different from other university clubs in that they are not like the rightists.

Our cheering party is also the service body of Rikkyo Gakuin.

They have fundamental, but hard and severe training, and they make efforts to develop their physical strength, because a new rule of basketball will be carried out this August, and basketball matches will be much speeded up and need stronger bodies. Great opposition is expected from their rivals Keio and Meiji.

This club is being watched with keen interest concerning how to accept the techniques which Mr. Y. Oshima gained in Rome Olympic Games and how to use them in their matches, and how to influence their quick attack.

We expect the Rikkyo Basketball team to contain a center figure, Mr. Yamamoto.

The Rikkyo Volleyball Club hopes to enter the 6-University Volleyball League and the Intercollegiate Championship which will be held this April and July.

Members of this club are in their best condition, and they have only to keep this to win titles. Rikkyo team lays the points more on six-man system than nine-man one. The volleyball system will lean to six-man system from nine-man according to the new rules of volleyball.

Besides these clubs, the Softball Tennis Club and the Ice Hockey Club are promising.

When a meeting under the auspices of Rikkyo Gakuin is held, the members of the club help in the progress of the meeting and with the entertainment of guests. Moreover, sometimes the members call on people who have no relatives at the welfare facilities, and comfort them by giving a play and a concert. Discipline in the club is very strict. But the friendships which spring up through the club activities are real and warm ones.

Sano gave his view of the recent rooting at Jingu Stadium. "In the last season, we seldom saw games with the stands packed full of students. This was because troublesome students were forced by leaders to sit at certain places or to sing in loud voices. So this year, we won't force students to cheer.

We want the students to enjoy the games. Also, don't forget that this year the Tokyo Big Six University Cheering Club Festival will be held at Rikkyo University. A lot of entertainment is scheduled for it," he added.

Captain-Manager Meet

For the first time, a Captain-Manager Meeting was held from March 19 to 22 at Seisenryo, Kiyosatomura, in Yamanashi prefecture under the auspices of the Athletic Association.

Representatives from thirty-four clubs of the Athletic Association and from five women's sports groups were present, also, President Matsushita and Chairman Ishijima were present.

Subjects of this meeting were "Rules governing the Athletic Association" and "Cooperation among the clubs."

Animated views about them were exchanged. Meetings will be held every year and will play an important part in the growth of Rikkyo sports.

Newsweek Newsweek Newsweek Newsweek Newsweek

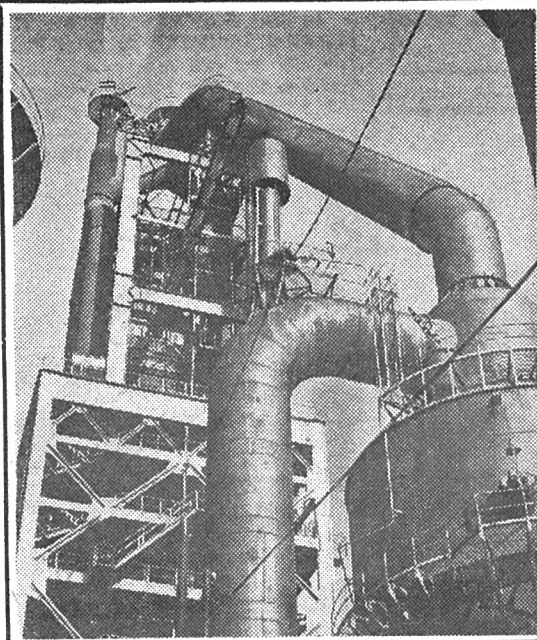
祝 御 入 学

国際英文週刊誌 **Newsweek** は世界のあらゆる動きを知る事が出来ると共に活きた英語の勉強に最も役立ちます新入生に限り半額にて特別予約を受付中●申込み用紙は売店にあります

ニューズウィーク東京支社

(211) 1691~5

Newsweek Newsweek Newsweek Newsweek Newsweek



NIPPON KOKAN K.K.

(Japan Steel & Tube Corporation)

Head Office :

Ohtemachi, Tokyo. Tel. 231-7711

RIKKYO ECHO

Prof. MITSUAKI KAKEHI, Publisher & Editor
 Assist. Prof. JUN-NOSUKE KAWASAKI, Associate Editor
 Assist. Prof. MASAOKI KAWAGUCHI, Associate Editor
 Assist. Prof. HISASHI MOROOKA, Associate Editor

STUDENT STAFF:

Tohru Fujimoto, Editor-in-chief	Osamu Ohki, News Editor
Norimasa Okada, Managing Editor	Hiroo Yamada, Art Editor
Yasuyuki Tada, Monitor	Hiroyasu Furuya, Sports Editor
Masahiro Yada, Business Mgr.	Syoichi Kato, SENA Officer
Yukiko Kamimura, Accountant	Hiroshi Kamikura, SENA Officer

FACULTY ADVISORS:

Prof. Tokuji Ogawa; Prof. Hisakazu Kaneko
 Prof. Virginia B. Haley; Prof. Carey C. Perry
 OFFICE: THE RIKKYO ECHO of Rikkyo University
 3-chome, Ikebukuro, Toshima-ku, Tokyo. Tel. (983) 0111

Understanding and Cooperation

Noteworthy has been in recent months a movement for construction of a student hall on the campus—a movement which has been gaining ground among students of major private universities. It is specially significant in view of an increasing trend in our higher education for mass production of college graduates.

Since the central objective of education is to help the students to discover the fundamental values of life, it is not enough for the university merely to function as an institution to help them to acquire knowledge. Its essential function should rather be to help them in their endeavor to build up manhood or womanhood; and in this most important work of character-building personal touch with professors and fellow students constitutes an indispensable factor.

The chief purpose of the student hall, as envisaged by its promoters, is to provide the students with facilities for such personal intercourse with their seniors and among themselves. Needless to say, all the campus life, including classroom work and extra-curricular activities, should be organized with the personal forces as basic factors. The fact is, however, that inadequate financial resources of private universities in this country, not excepting Christian institutions, force them to finance their educational programs by means of mass production—a means contrary to principles of modern education.

Promoters of the student hall, with all their enthusiasm, must sympathize, on the other hand, with the governing boards of universities for their efforts constantly to reconcile ideals of education with realities of Japanese life, backing them up in every step to improve upon the existing conditions. When a climate of mutual understanding and cooperation is thus created on the campuses, dreams of well-equipped student halls will go a long way toward materialization.

In so far as Rikkyo University is concerned, a realistic step toward realization of the project will be first of all to organize a committee for promotion of the movement on a really all-Rikkyo basis, inclusive of alumni.

The Mainichi Daily News

A National Newspaper For International Readers



Monthly subscription: ¥300

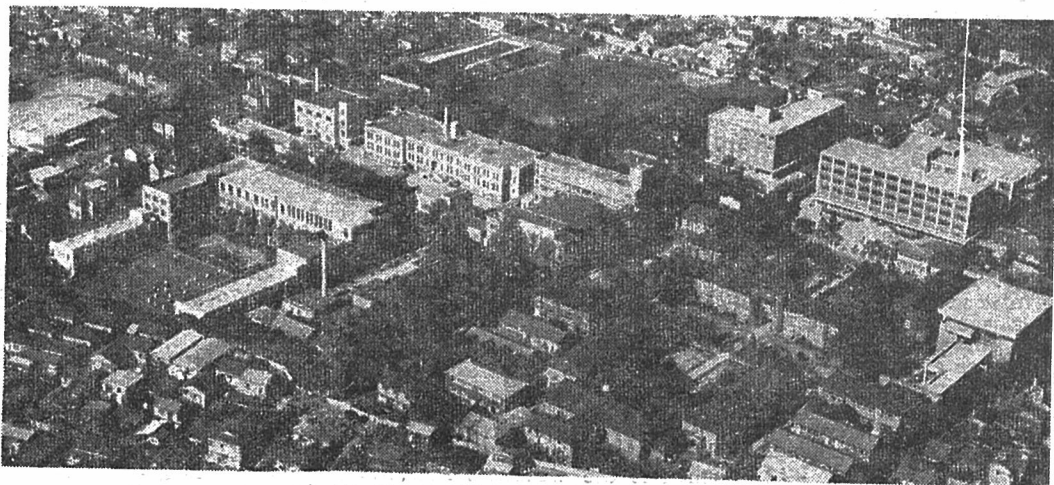
THE MAINICHI NEWSPAPERS
 Yuraku-cho, Chiyoda-ku, Tokyo
 Tel: 201-0675

Growth of Rikkyo Univ.

Students Now over 8,000

In these sixteen postwar years Japan has established independent conditions, both political and economic. And Rikkyo has grown by leaps and bounds in number of students and in standing among other universities in Japan. Rikkyo was founded eighty five years ago. In 1874 the Right Reverend Channing M. Williams, first Bishop of Edo, established a private school which was the predecessor of Rikkyo University.

At the start of the school there were only five boy students. In 70 years, from 1874 to 1945, the number increased to 1,000; and in 15 years, from 1945 to 1961, it reached over 8,000. Why has it increased so rapidly? We want to look back upon the past development of Rikkyo.



A Bird's-eye View of Rikkyo Campus

New Educ. System

Just before the outbreak of World War II there were, as we just mentioned, some thousand students in the University. During the war a College of Science was newly established and the College of Arts was closed temporarily due to wartime condition. Soon after the termination of the war the Colleges of Arts and Economics were re-opened.

In December of 1945 General Headquarters of the Allied Powers forbade the teaching of Moral lessons, Japanese History and Geography. Moreover the Education Mission from U.S.A. presented to G.H.Q. the reports on the prewar system of education in Japan.

The old educational system that was controlled by the Ministry of Education was examined. As a result, the 6-3-3-4 educational system was founded. The educational system of the primary and the middle schools became the compulsory education.

In 1956 the Department of Japanese Literature was inaugurated in the College of Arts with an excellent faculty.

In 1958 the Department of Sociology, in the College of Arts, became a separate college to be known as the College of Social Relations.

In 1959 the College of Law and Politics was established. Having one of the best law faculties in Japan, the newborn college is expected to play an important role in Japanese jurisprudence.

In 1951 the University was authorized by the Ministry of Education to set up a graduate course for the Master's degree, in Economics, and in English

and American Literature.

Now the University has other graduate courses (for the Master's degree), in History, in Systematic Theology, in Applied Psychology, in Japanese Literature, in Chemistry, in Atomic Physics, in Mathematics, in Applied Sociology; and graduate courses (for the Doctor's degree) in Philosophy, in Systematic Theology, in English and American Literature, in Western History, in Economic Policies, in Atomic Physics, in Applied Sociology.

In 1946 Dr. Junzo Sasaki was elected President, being re-elected in 1949.

In 1955, Dr. Masatoshi Matsushita was elected President by the Board of Trustees.

In 1959, at the expiration of his term of office he was re-elected by the majority votes of the faculty and administrative officers under the newly adopted president-election system.

Facilities Better

In 1956, St. Paul's Green Heights was constructed. This new athletic ground extends over an area of nearly 30 acres and contains well-arranged courts, fields, rinks and other facilities.

In 1959, the first part of our new dormitory, Rosalie Leonard Mitchell Memorial Hall, was dedicated. It stands at a corner of the campus.

In 1959 several new buildings were added to the University, such as Building No. 5, which is generally known as the Law Department Building; No. 6, which is a new Faculty Research Building.

The construction of a new library has just been completed at the northwestern corner of

the campus, next to the old library. The new library has three stories and a basement and has a capacity of 350,000 books.

In the spring of 1957 President Matsushita went to England as Prime Minister Kishi's personal envoy, with the specific mission of dissuading the British Government from testing nuclear weapons in the Pacific.

Future of Rikkyo

As mentioned above, our university has five colleges; the College of Arts, the College of Economics, the College of Science, the College of Social Relations, and the College of Law and Politics. The student enrollment has increased from one thousand to eight thousand. Rikkyo has shown a remarkable development quantitatively but we are very afraid lest it should lose the comfortable, homey atmosphere of the old Rikkyo. Qualitatively speaking, Rikkyo is not sufficient to satisfy the demands of the students who really want to study. For instance, students desire to have their own Hall. This desire the school authorities cannot ignore. Now the University is not only the place of research, but also still more the place of leading a fruitful campus life.

The present problems being so, what is most important is that the students themselves, should have an intense college spirit.

In all fields Rikkyoites must be positive. The growth of the undergraduates will mean the progress of Rikkyo. In the future the students will display the Rikkyo Spirit still more. We hope Rikkyo will ever progress onward.

Japan's finest



Choice of Multitude



Always Keeps Accurate Time!

SHINTARO CHINO & CO.

Watches & Jewels

Head Office 1156 2-chome, Ikebukuro.
 TEL. (982) 7101-5